



NC330SW Database Editing Utility

IL828 Installation Instructions

Tek-CARE®300II Nurse Call System • Rev. 2 – 11/2016

Application

TekTone®'s NC330SW Database Editing Utility converts a Tek-CARE®300II *stations.db* database file to and from a comma-separated-values file (*stations.csv*). *Stations.csv* can be opened and edited by commonly available spreadsheet software such as Microsoft Excel, Microsoft Works or Quattro Pro.

The Tek-CARE®300II nurse call system must include an NC304 series master station. The NC330SW utility includes error checking that prevents many problems, but perform a walk-through of the facility after programming to ensure that programming data has been correctly updated.

First, the *stations.db* file is downloaded from the nurse call system to a personal or laptop computer running Microsoft Windows® 98 or XP. Then the NC330SW utility converts the file into a *stations.csv*. The *stations.csv* file is then edited using a spreadsheet program. After editing is completed, the NC330SW utility converts the *stations.csv* file back into the *stations.db* format used by the Tek-CARE®300II nurse call system. The new *stations.db* file is then uploaded to the nurse call system. The *stations.csv* spreadsheet file can be retained on the computer for reference or future editing.

Procedure

1. Upload the stations database (*stations.db*) from the Tek-CARE®300II Nurse Call System to a personal or laptop computer running Microsoft Windows® 98 or XP, according to instructions in the *System Operation, Configuration and Programming—System Configuration and Programming—Station Database Functions* section of the IL715 Operation, Installation and Service Manual.
2. Place *stations.db* and the two NC330SW files (*StationDB_Edit.exe* and *stations.csv*) in a single directory on the computer. (Keep a copy of *stations.db* in another directory elsewhere on the computer in case the process needs to be restarted from scratch.)

3. Run *StationDB_Edit.exe* by double clicking on its filename in Windows Explorer. Press **R** to “read” the data from the *stations.db* file into the *stations.csv* file. Press **E** to “exit” the program.
4. Edit the data using a spreadsheet program that can read the CSV file type. **Do not include commas in any fields, because the CSV file type uses commas to indicate the end of each field.** Then save the file as a CSV type (comma delimited or comma separated values), named *stations.csv*. See the *Data Entry* section for more information.
5. Run *StationDB_Edit.exe* again. Press **W** to “write” the data from the *stations.csv* file into the *stations.db* file. If an error message occurs, correct the problem described and then try again. Press **E** to “exit” the program.
6. Download the *stations.db* file to the Tek-CARE®300II Nurse Call System according to instructions in the *System Operation, Configuration and Programming—System Configuration and Programming—Station Database Functions* section of the IL715 Operation, Installation and Service Manual.
7. For the changes to take effect, perform these commands on the Tek-CARE®300II Nurse Call System:

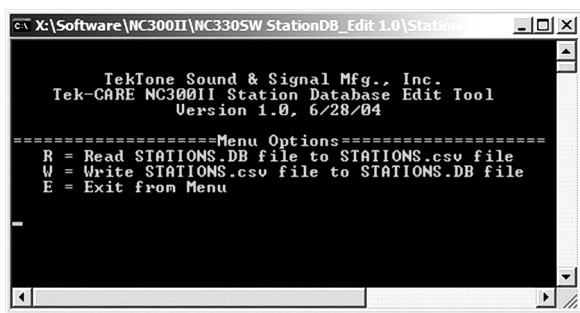
Transmit Database (menu, 2, 3)—Transmits the new programming information to the other master stations and to the central equipment. This process takes 15–20 minutes to complete. Skip this step if the system has just one master station.

Detect System Stations (menu, 3, 7)—Synchronizes the master stations with the new data.

8. Perform a walk-through of the facility to ensure that programming data has been correctly updated.

Commands

The NC330SW utility (*StationDB_Edit.exe*) provides this menu upon startup:



R (Read)—Converts the *stations.db* binary file into a *stations.csv* file format. Not all Tek-CARE®300II programming data is converted, just those items typically edited by users.

W (Write)—Converts the editable *stations.csv* file back into the *stations.db* binary format.

E (Exit)—Exits the program.

Data Entry

Reminder: Do not type commas in any fields. The following editable data is included in the *stations.csv* file:

Port: Displayed for reference only—any changes to this field will not be downloaded to the nurse call system.

Address: Displayed for reference only—any changes to this field will not be downloaded to the nurse call system.

Bed Number: Enter the patient station's 4-digit bed number. The bed number can include capital letters A–Z, numerals 0–9, and be no more than 4 characters long.

Custom Label 1: Enter the patient station's 16-character custom label 1. Custom label 1 can include spaces, capital letters A–Z, numerals 0–9, and be no more than 16 characters long. (The default filler "16CharBlankLabel" is converted to a blank field by the NC330SW utility's *Write* procedure.)

Custom Label 2: Enter the patient station's 16-character custom label 2. Custom label 2 can include spaces, capital letters A–Z, numerals 0–9, and be no more than 16 characters long. (The default filler "16CharBlankLabel" is converted to a blank field by the NC330SW utility's *Write* procedure.)

Bed ID 1: The patient station's single-character bed ID 1. Valid entries are capital letters A–Z and numerals 0–9.

Bed ID 2: The patient station's single-character bed ID 2. Valid entries are capital letters A–Z and numerals 0–9.

Online: Sets the patient station's online or offline status. Valid entries are *online* or *offline* (in lowercase letters). Error checking default is *offline*.

Priority: Sets the patient station's priority. Valid entries are *routine*, *pers attn* or *priority* (in lowercase letters). Include the space in *pers attn*. Error checking default is *routine*.

Privacy: Sets the patient station's privacy status. Valid entries are *private* or *non-private* (in lowercase letters). Include hyphen in *non-private*. Error checking default is *non-private*.

Paging Enabled: Sets the patient station's paging enabled status. Valid entries are *paging enabled* or *paging disabled* (in lower case letters). Include the space in either entry. Error checking default is *paging enabled*.

Zones: Sets the patient station's active zones. Valid entries are capital letters A–P. Enter one or more letters with no spaces to select active zones. For example:

ABCDEF GHIJ KLMNOP—All zones are active.
CL—Zones C and L are active.
P—Zone P is active.