

## Healthcare Communications for today... and tomorrow.

TekTone's Tek-CARE® Event Monitors and Reporting software are available for every Tek-CARE nurse call system and the Tek-ALERT® alert integration system.

### Tek-CARE® Appliance Server

Tek-CARE software runs on the Tek-CARE Appliance Server. This proprietary server was developed as part of the Tek-CARE family of nurse call systems, which are designed to exceed rigorous life-safety standards.

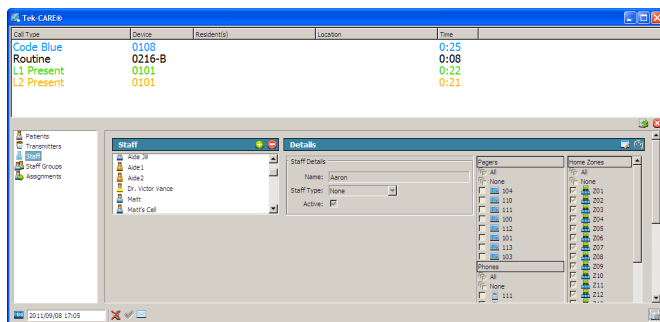
The Tek-CARE Appliance Server can simultaneously connect to any current TekTone® nurse call system, plus a variety of foreign systems—such as fire alarm and security systems.



### Event Monitors

**Event Monitor** software runs on the Tek-CARE Appliance Server and displays the calls, events and messages from all connected nurse call and foreign systems at once. The Event Monitor software may also be installed on up to nine PCs that are networked with the Tek-CARE Appliance Server (directly or via the facility LAN). These “remote” event monitors display all calls, events and messages as they occur.

### Tek-CARE Reporting System



Event Monitor

With the **Tek-CARE Reporting** software and a standard web browser, any computer networked with the Tek-CARE Appliance Server can create activity reports for all connected nurse call and foreign systems. Plus, reporting databases can be combined to create a corporate report that includes multiple facilities.

The Quick Links menu has shortcuts to create standard detailed and summary reports, such as:

- All events from the last hour, 24 hours, or 7 days.
- All events from last week through Saturday or Sunday.
- All events from this week beginning Sunday or Monday.
- All events from today, or from yesterday.

Quick Links			
<ul style="list-style-type: none"> <li>• Links in Summary and Summary &amp; Details columns can be bookmarked by dragging them to the bookmark bar.</li> <li>• All links are time relative and reflect the most up-to-date information at the time of clicking them.</li> </ul>			
Name	Description	Summary	Summary & Details
Last Hour	All events from the last hour.	Last Hour - Summary	Last Hour - Summary & Details
Last 24 Hours	All events from the last 24 hours.	Last 24 Hours - Summary	Last 24 Hours - Summary & Details
Last 7 Days	All events from the last 7 days.	Last 7 Days - Summary	Last 7 Days - Summary & Details
Last Week (Sun)	All events from last week through Saturday.	Last Week (Sun) - Summary	Last Week (Sun) - Summary & Details
Last Week (Mon)	All events from last week through Sunday.	Last Week (Mon) - Summary	Last Week (Mon) - Summary & Details
This Week (Sun)	All events from this week from Sunday.	This Week (Sun) - Summary	This Week (Sun) - Summary & Details
This Week (Mon)	All events from this week from Monday.	This Week (Mon) - Summary	This Week (Mon) - Summary & Details
Today	All events from today.	Today - Summary	Today - Summary & Details
Yesterday	All events from yesterday.	Yesterday - Summary	Yesterday - Summary & Details

Quick Links Menu


Create custom reports using the **Reporting Options** window to define the reports parameters (see image on reverse). Results may be filtered by device, time and day, zone, location, resident/patient, and event type. Reports may be printed using a web browser such as Internet Explorer, or they can be easily exported to a spreadsheet using the CSV file format.

### LS453 Email Output Software

With the addition of the LS453 Email Output software, reports can be automatically created and emailed to selected recipients. The email output software can also automatically send nurse call and foreign system notifications to staff via email or SMS text messages.

# Tek-CARE Event Monitors & Reporting Software

## Reporting Options Window



Version 7254  
TekTone.com

**Database:** Tek-Care Reporting  
**Events:** 609234  
**First Event:** 1970-01-01 00:00:06  
**Last Event:** 2015-01-08 11:14:27

### Report Filtering

- By default all events will show up in the report. Selections can be made to narrow the scope of the report.
- Uncheck "No Filter" to make changes in selection boxes.
- "No Filter" and having everything selected in a list will not always produce the same results. If some events have no data for that field, they will be shown if "No Filter" is selected but not if "No Filter" is off and all values for that field are selected.
- Hold (CTRL) to select or deselect a single object from a list.
- Use 24 hour time.

#### Time Period

Start: 01 / 02 / 2015 15 : 05  
 End: 01 / 09 / 2015 15 : 05  
 MM / DD / YYYY HH : mm  
 Filter: Last 7 Days

#### Time Range (Shift)

Start: : :  
 End: : :  
 HH : mm  
 No Filter

#### Response Time

Only events with response times over...  
 00 : 00 (mm:ss)

#### Zones

LOCAL: 101 THRU 131  
 LOCAL: 101 THRU 131 HC1  
 LOCAL: 151 THRU 179  
 LOCAL: 151 THRU 181  
 LOCAL: 151 THRU 181 REHAB  
 LOCAL: 201 THRU 231  
 LOCAL: 201 THRU 231 HC2  
 LOCAL: 251 THRU 282  
 LOCAL: 251 THRU 282 PAV  
 LOCAL: 300 Wing

No Filter Filters

#### Devices

LOCAL: 0209  
 LOCAL: 0210  
 LOCAL: 0211  
 LOCAL: 0212  
 LOCAL: 0213  
 LOCAL: 0214  
 LOCAL: 0215  
 LOCAL: 0216  
 LOCAL: 0217  
 LOCAL: 0218

No Filter Filters

#### Locations

LOCAL: 0237  
 LOCAL: 0238  
 LOCAL: 0239  
 LOCAL: 0240  
 LOCAL: 0241  
 LOCAL: 0242  
 LOCAL: 0243  
 LOCAL: 0244  
 LOCAL: 0245  
 LOCAL: 0246

No Filter Filters

#### Patients

Carley  
 Dustin  
 James  
 John  
 Jordan  
 Larry  
 Moe  
 Rachael  
 Robert

No Filter Filters

#### Event Types

Alarm  
 Audio Disturbance  
 Auxiliary 1A  
 Auxiliary 1B  
 Auxiliary 2A  
 Auxiliary 2B  
 Auxiliary 3A  
 Auxiliary 3B  
 Bath  
 Bed Emergency

No Filter Filters

### Report Formatting

- When grouping events in a detailed report, a small gap is recommended for overlapping events.

#### Summary

Overall  
 Zone  
 Device  
 Location  
 Patient  
 Hour

Include Full Summaries

#### Details

Show Details  
 Include Zones  
 Group overlapping events, allowing a gap up to...  
 00 : 05 (mm:ss)

#### Output Type

HTML  
 CSV

#### Report Description (optional)

## Sample Report

### Tek-CARE® Report

**Date Created:** 03/25/2014 15:43:45  
**Database:** TekCare Reporting  
**Date Range:** 03/18/2014 15:46:00 - 03/25/2014 15:46:00  
**Call Types:** Alarm, Bath, Code Blue, Emergency, L1 Present, L2 Present, Routine  
**Matching Events:** 77 out of 54177

### Summaries

[show all sections](#) | [hide all sections](#) | [show all graphs](#) | [hide all graphs](#)

#### Overall Summary

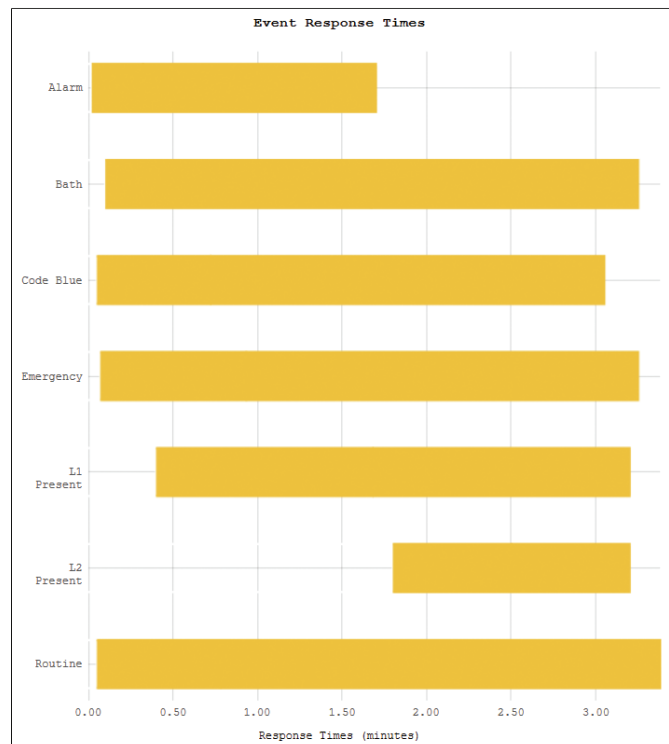
[hide section](#)

Search:

Event Type	Occurrences	Min Response	Avg Response	Max Response
Alarm	27	0:01	0:19	1:42
Bath	2	0:06	1:40	3:15
Code Blue	5	0:03	0:43	3:03
Emergency	13	0:04	0:56	3:15
L1 Present	7	0:24	1:41	3:12
L2 Present	2	1:48	2:30	3:12
Routine	21	0:03	0:47	3:23
<b>Totals</b>	<b>77</b>	<b>0:01</b>	<b>0:48</b>	<b>3:23</b>

[show graph](#)

## Sample Graph



TekTone's quality system is registered by DQS to the ISO 9001 standard. (Reference #10001510.)

324 Industrial Park Road • Franklin, NC 28734 • [tektone@tektone.net](mailto:tektone@tektone.net)

Phone: 800.327.8466 or 828.524.9967 • Sales: option 2 • Tech Support: option 3

[www.tektone.com](http://www.tektone.com)

