

Features

- Low voltage operation
- Reliable alternate power supply
- Integrated circuit design
- Easy installation

Description

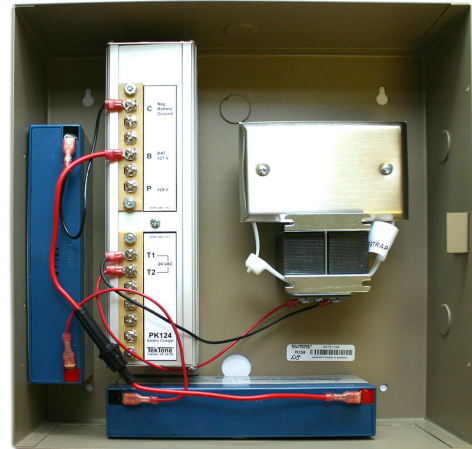
The PK124K Battery Backup Kit provides continuous battery charging so that if power to system equipment is interrupted, standby operating power is provided for up to approximately 6 hours. (Time may vary depending on system size and usage.)

The PK124K kit includes a transformer, a battery charger and two batteries—all preinstalled in a 19-gauge cold-rolled steel housing. Knockouts are included on all sides except the lid, to allow connection of electrical conduit from any direction. In addition, the lid has a knockout which can be used to install an optional key lock. The enclosed single-gang electrical junction box is galvanized steel with a stainless steel cover plate.

TekTone® systems supported by the PK124K include the DS100 Door Sentry & Emergency Alarm System, the CM800 Emergency Call System, Tek-ENTRY® Apartment Entry Systems, and the Tek-SAFE® Area of Rescue Assistance System.

Specifications

Dimensions:	Height:	11.75"	(300 mm)
	Width:	11.75"	(300 mm)
	Depth:	3.75"	(96 mm)
Construction:	19 gauge, cold-rolled steel		
Transformer:	24 VAC, 30 VA (SS106)		
Storage:	Two 12 VDC batteries (BA001)		
Connection:	Screw terminals (on PK124)		
Mounting:	Surface		



PK124K Battery Backup Kit

Required Components

- CM800 Emergency Call System
- DS100 Door Sentry & Emergency Alarm System
- Tek-ENTRY® Apartment Entry Systems
- or-
- Tek-SAFE® Area of Rescue Assistance System

Optional Components

- Mier BW3000 Offset Cam Lock, or equivalent