

## PM311C, PM312C Pillow Speaker Intercom Modules IL429 Specification Sheet

Tek-CARE®300II Nurse Call System • Rev. 13 - 11/2016

### Features

- UL® 1069 Listed (when used with IR319B, IR320B, IR311E or IR312E patient stations)
- Provides hands-free pillow speaker intercom
- Mounts directly to patient stations

### Description

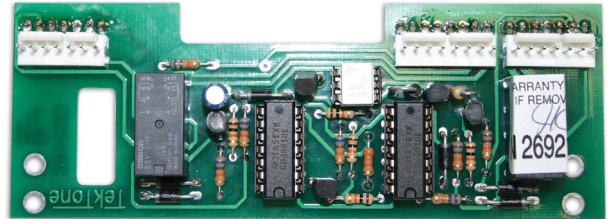
The PM311C and PM312C Pillow Speaker Intercom Modules are for use with the Tek-CARE®300II Nurse Call System using IR319B, IR320B, IR311E or IR312E patient stations and SF41ZDL, SF41ZKL, SF31ZDL or SF31ZKL pillow speakers. The modules provide for reliable, two-way hands-free communication from the pillow speaker to the master station. Calling the nurse is accomplished by pressing the push button identified with the nurse symbol. Call placed assurance is indicated at the patient station.

If the pillow speaker is removed from its receptacle during communication, the call is automatically transferred to the patient station speaker. If the pillow speaker or call cord is removed from its receptacle when not in use, a non-cancellable cord-out call is registered at the master station. Standard SF401-series or SF311-series call cords may be used without removing modules. Communication is automatically transferred to the patient station speaker.

### Listings



UL® 1069 listed; UL® File Number E71599.



PM312C Pillow Speaker Intercom Module

### Specifications

Dimensions:	Width:	5"	(127 mm)
	Depth:	1.875"	(47.6 mm)
	Height:	0.5"	(12.7 mm)
Construction:	PC board with quality electronic components		
Mounting:	Plug-in connectors mounted to patient station		
Wiring:	Multiplex		

### Required Components

Tek-CARE®300II Nurse Call System

IR319B or IR320B Patient Stations  
with SF41ZDL or SF41ZKL Pillow Speakers

–or–

IR311E or IR312E Patient Stations  
with SF31ZDL or SF31ZKL Pillow Speakers