

Tek-CARE®750
fall detection and monitoring system

Your (f)all-encompassing care solution



TekTone®
sensing by  **vayyar**™

A virtual care assistant in every room

**Older adults demand constant protection,
complete privacy, and freedom from
buttons and wearables.**

Tek-CARE750, with sensing by Vayyar, detects falls using 4D imaging that respects privacy at all times.

Integrated with Tek-CARE nurse and emergency call

systems, touchless, camera-free RF sensors operate 24/7 in all lighting conditions and even the steam of a bathroom where fall risk is highest.

You need never fall short again.



Standard solutions are failing residents

Tek-CARE750 detects falls and summons help. When people can't or won't ask for assistance, you can count on alerts that enable timely intervention.



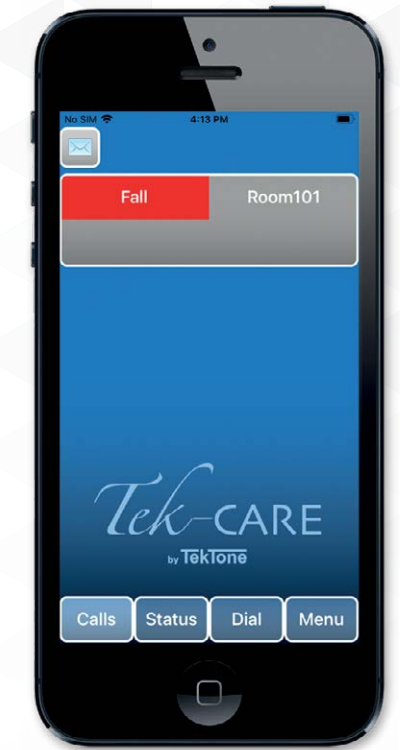
	Wearables	Cameras	Tek-CARE750
Maintains privacy at all times	✓	✗	✓
Touchless technology	✗	✓	✓
All areas and all conditions	✗	✗	✓
Machine Learning AI	✗	✓	✓

Standard solutions

A lifeline for your front line

Tek-CARE750 enables care providers to improve operations by:

- ▶ Ensuring rapid response to falls
- ▶ Reducing risk of future falls
- ▶ Easing staff workload



The final word in falls management

Instant passive fall detection

Eliminate long lies when residents fail to push a pendant button or pull a cord, with full room coverage.

Real-time fall verification

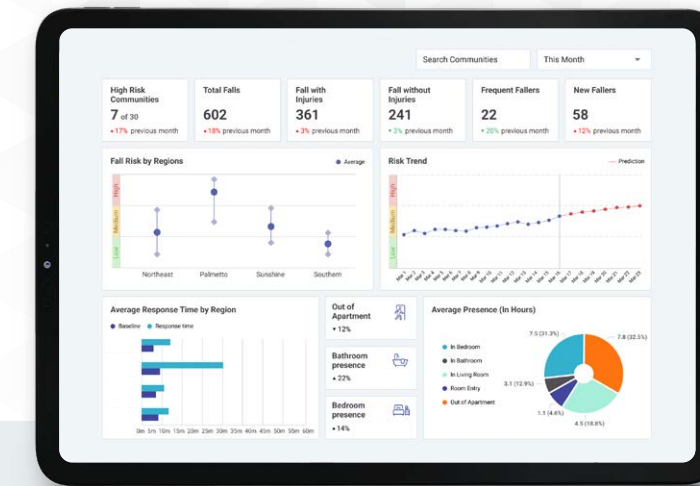
Overcome the issue of alarm fatigue and delayed response caused by false alerts resulting from call system overuse or legacy device malfunction.

Hidden fall identification

Reveal the minor falls that half of residents fail to report and which are the leading risk factor for subsequent serious falls.

Put data at the core of care

Tek-CARE750 also gathers rich behavioral data supporting health analytics via the Vayyar Care Insights platform, to provide an end-to-end falls management service.



Machine learning-driven trends



Self-recovered falls

Reveal unreported minor falls, the leading risk factor for future falls.



Bathroom usage

Support diagnosis of digestive issues and UTIs, preventing low blood pressure and sepsis.

TekTone[®]
sensing by Vayyar



Time in bed

Uncover insomnia and depression, and manage conditions such as CHF and COPD.*



Time in room

Highlight social isolation that can cause heart failure, stroke, and cognitive decline.

What care providers are saying:

► Inconspicuous Affordability

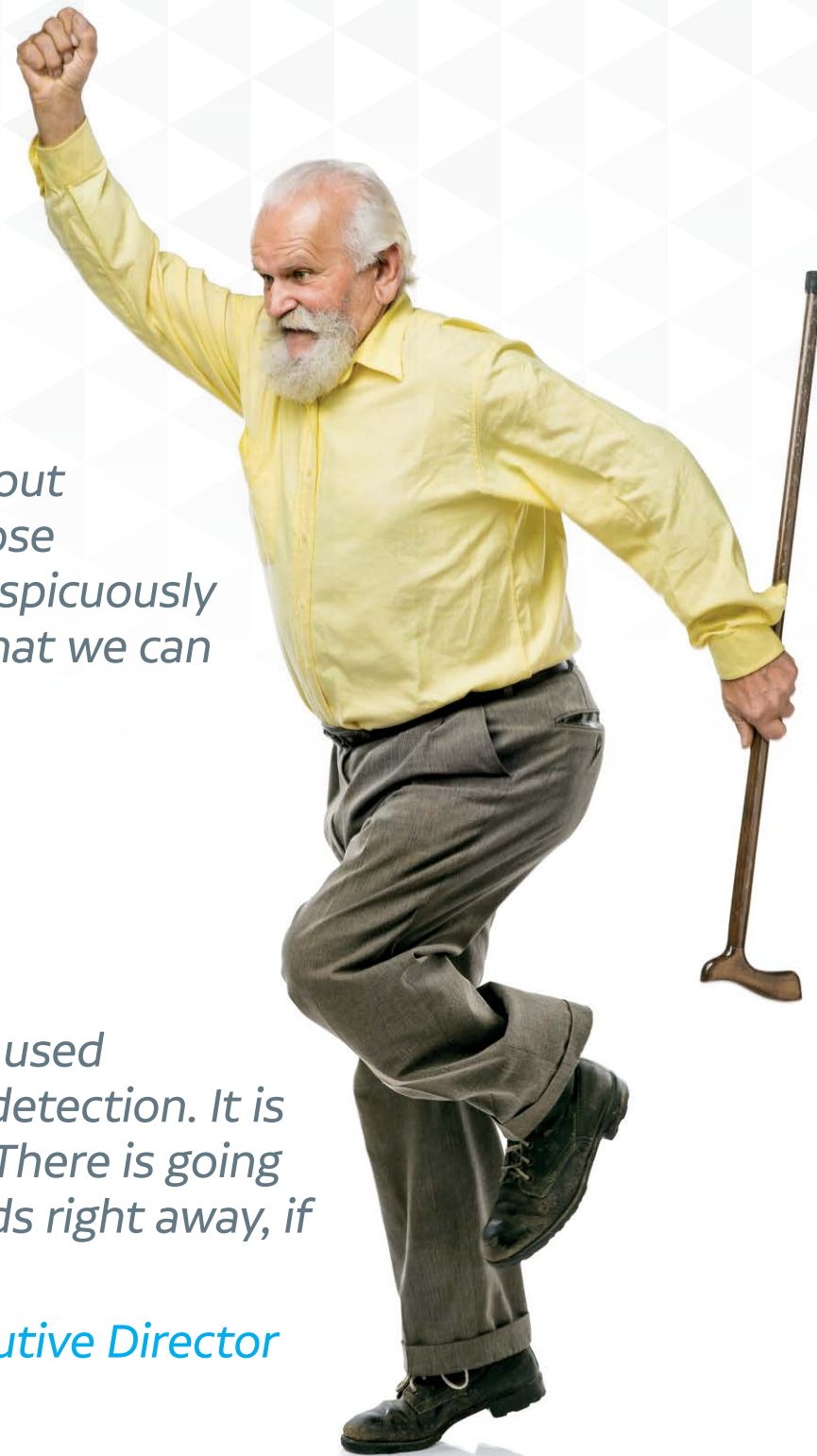
“One of the things I really like about the system is that I could put those throughout the home very inconspicuously and it comes in at a price point that we can do that for people.”

Nick Alexander, Vice President
THS Remote Support Services
thsrss.com

► Real-Time Peace of Mind

“None of the technology we had used previously gave us real-time fall detection. It is so different, accurate and good. There is going to be a staff person that responds right away, if they have a fall.”

Nathan Gerhard, Associate Executive Director
Keystone Human Services
khs.org



Click [here](#) to see testimonial videos.

FAQs

Q “Is there a pendant?”

A No, Tek-CARE750 is a completely touchless device.

Q “What needs to be done once it's set up?”

A Absolutely nothing! Our completely passive sensors work without the need for any additional steps.

Q “Does Tek-CARE750 respect privacy?”

A Yes. Tek-CARE750 does not involve cameras or optics, so there's no possibility of privacy being violated or images being hacked.



How to reach us

Address:

**324 Industrial Park Road
Franklin, NC 28734**

Email:

tektone@tektone.com

Visit:

www.tektone.com

or phone:

800.327.8466

828.524.9967

Sales:

option 2

Tech Support:

option 3

We look forward
to hearing from you.



TekTone[®]
sensing by  **vayyar**[™]